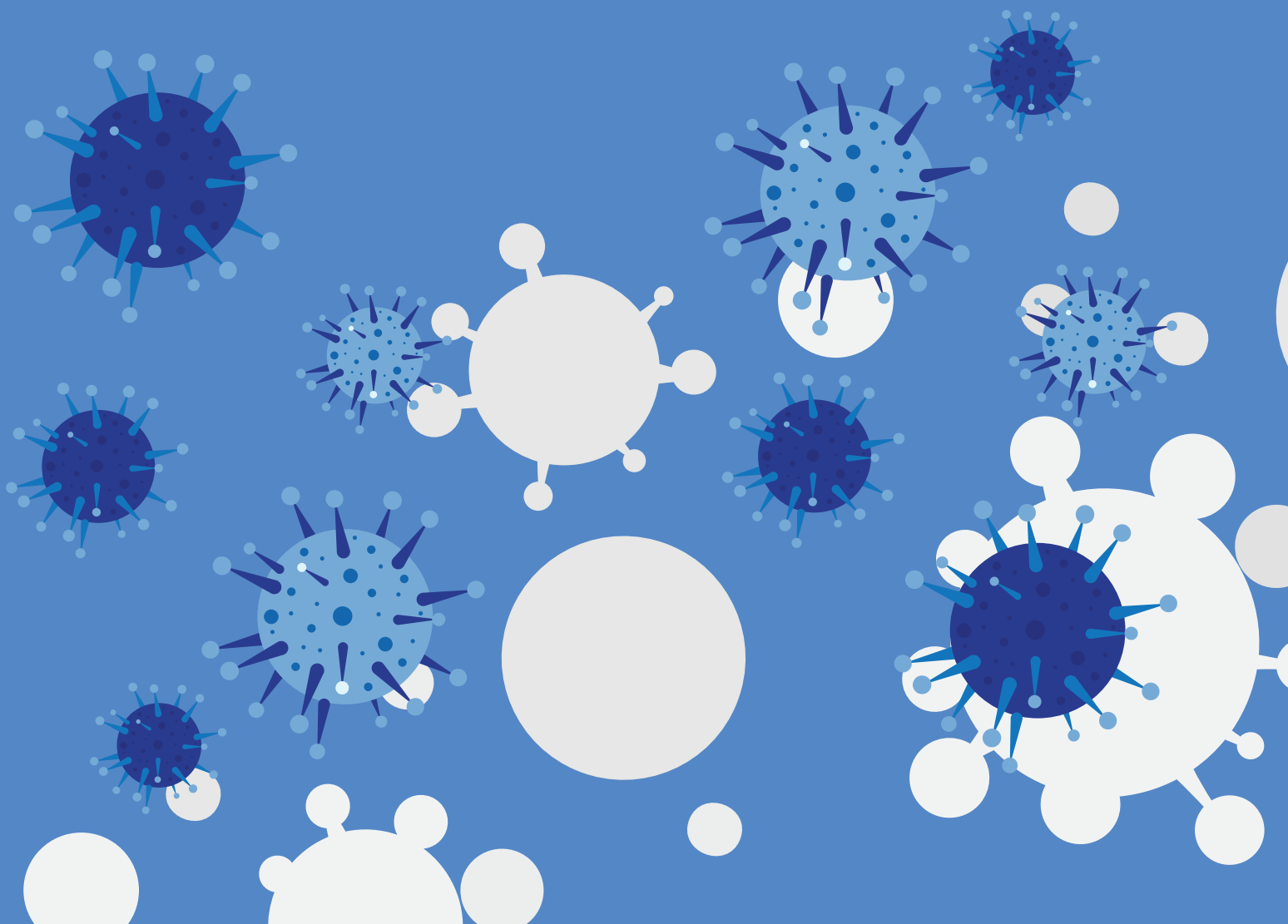


New Coronavirus Rules – January 2021



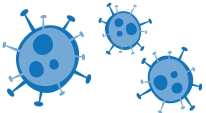
New Coronavirus Rules – Jan 2021:

Where do they apply to?



Nationally - (Everyone).

Why?



More people are getting sick with Coronavirus.



To help stop it spreading.

When will the rules stop?



When the Government tells us.

Hands. Face. Space:

Approximately 1 in 3 people who have coronavirus have no symptoms and could be spreading it without realising it.

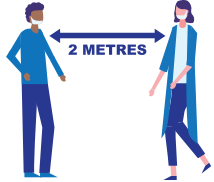
Always Remember:



Hands - wash your hands regularly and for at least 20 seconds



Face - wear a face covering in indoor settings where social distancing may be difficult, and where you will come into contact with people you do not normally meet



Space - stay 2 metres apart from people you do not live with where possible, or 1 metre with extra precautions in place (such as wearing face coverings)

Meeting Others:

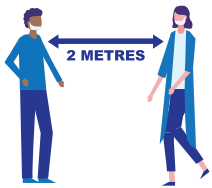
Meeting other people:



You cannot leave your home to meet socially with anyone you do not live with or are not in a support bubble with.



You cannot have or visit others in your homes and gardens.



Stay 2 metres apart from anyone not in your household.

Meeting other people outdoors



You cannot meet people outside unless they live with you or are part of your support bubble.



You may exercise on your own, with one other person, or with your household or support bubble. This should be limited to once per day, and you should not travel outside your local area.

What is a support bubble?



It is a group of people you do not have to distance from.



Adults living alone or single parents (children under 18) can be in a support bubble with people in one other household.

Can I visit someone's house in another area?



You must not visit anyone's home except for your support bubble or the reasons listed below:

When can we meet with someone we don't live with?



- For children to stay with both parents, if they do not live together.
- For education or training.
- For legal reasons.



- Have childcare from a registered provider.
- In an emergency.



- Provide care or help a vulnerable person.
- To attend a birth at the mother's request.



- To move home (including viewing a property)
- To provide childcare as part of a childcare bubble.



- For a wedding or equivalent ceremony (Max 6 people)
- For a funeral (Max 30 people) or a wake (max 6 people)
- To visit a person who is dying.
- To work, volunteer or for charity.

Can someone visit your house to do repairs or work?



Official / registered trade people can go to other people's homes for work.

Essential Travel:

You must not leave your home unless you have a reasonable excuse (for example, for work or education purposes). If you need to travel you should stay local – and look to reduce the number of journeys you make overall.

The list of reasons you can leave your home and area include, but are not limited to:



- Work, where you cannot reasonably work from home.
- Accessing education and for caring responsibilities.



- Visiting those in your support bubble – or your childcare bubble for childcare.



- Visiting hospital, GP and other medical appointments or visits where you have had an accident or are concerned about your health.



- Buying goods or services that you need, but this should be within your local area wherever possible.



- Outdoor exercise. This should be done locally wherever possible, but you can travel a short distance within your area to do so if necessary (for example, to access an open space)



- Attending the care and exercise of an animal, or veterinary services.



- You can only travel internationally – or within the UK – where you first have a legally permitted reason to leave home.

Public transport



Only use public transport if you must, such as going to work.



A face mask must be worn on public transport unless you are exempt.

Car sharing



You are advised not to car share with those outside your household or support bubble.

School or work



Colleges, primary (reception onwards) and secondary schools will remain open for vulnerable children and the children of critical workers. All other children will learn remotely until February half term.



If you live at university, you should not move back and forward between your permanent home and student home during term time.



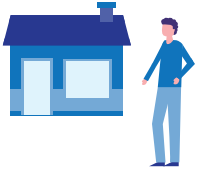
It is OK to travel to school or work where necessary.

Childcare

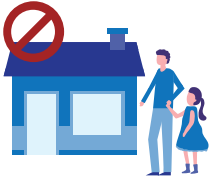


Nurseries & childminders are open.

Vulnerable children & children of critical workers can use registered childcare, childminders & other childcare activities.



Children of parents who are separated can move between households.



Parents are able to form a childcare bubble with one other household for the purposes of informal childcare, where the child is under 14.

Playdates and parties are not allowed.

Shops



A face mask must be worn in shops unless exempt.



You must distance from other people.

You must wait your turn to go into the shop.



You should use the hand sanitiser provided or your own.

Face masks and Coverings:

Who does not need to wear a face mask?



Children under 11

Employees in indoors settings



People with a medical exemption



Police and emergency workers

When speaking with someone who relies on lip reading

Who should wear a face mask at work?



Staff in retail & hospitality (essential shops) will be required to wear a face covering unless exempt.



Staff working on public transport and taxi drivers should wear face coverings.

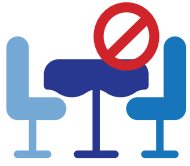
Can we be fined for not wearing a face mask or covering?



Police can issue fines of £200 for not wearing a mask in public places and on public transport - unless you are exempt.

Out and About:

Pubs, Restaurants and Takeaways



Pubs and restaurants are closed, but can be available for takeaway.



10PM CLOSE

Takeaways must close at 10pm but can deliver after 10pm until 5am.

Entertainment and Sport



All entertainment venues closed.



All indoor and outdoor sports facilities will be closed.



Organised outdoor sport for disabled people is allowed to continue.

Holidays



You cannot travel in the UK or abroad for a holiday - as it is classed as non essential travel.

Questions?

If you have any questions please ask someone in your household or in your support bubble to explain.

