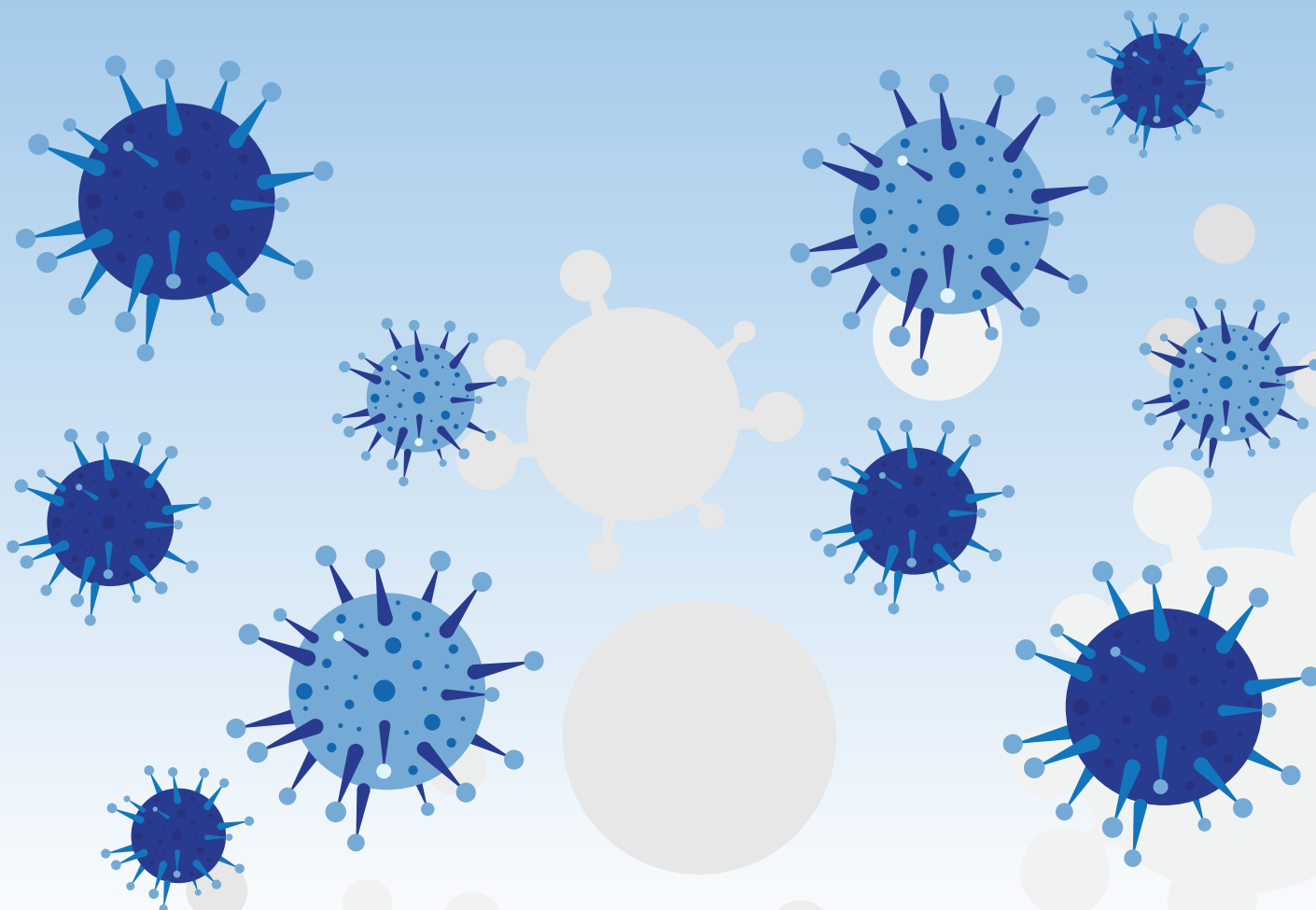


New Coronavirus Rules – September 2020



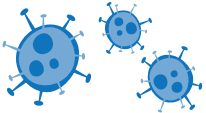
NEW CORONAVIRUS RULES – SEPT 2020:

WHERE DO THEY APPLY TO?



Many places including Lancashire and Blackpool.

WHY?



More people are getting sick with Coronavirus.



To help stop it spreading.

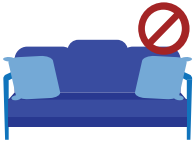
WHEN WILL THE RULES STOP?



When the Government tells us.

MEETING OTHER PEOPLE:

MEETING OTHER PEOPLE INDOORS



You must not meet people indoors unless they live with you or are part of your support bubble.



You cannot have others in your homes and gardens.



You cannot visit other people's homes or gardens, even if they are in an unaffected area.

MEETING OTHER PEOPLE OUTDOORS



You should not meet people outside unless they live with you or are part of your support bubble.

WHAT IS A SUPPORT BUBBLE?



It is a group of people you do not have to distance from.



Adults living alone or single parents (children under 18) can be in a support bubble with people in one other household.

CAN I VISIT SOMEONE'S HOUSE IN ANOTHER AREA?



You must not visit anyone's home either within or out of restricted areas except for your support bubble or the reasons listed below:

WHEN CAN WE MEET WITH SOMEONE WE DON'T LIVE WITH?



- For children to stay with both parents, if they do not live together.

- For education or training.



- For legal reasons.

- Have childcare from a registered provider.



- In an emergency.

- Provide care or help a vulnerable person.



- To attend a birth at the mother's request.

- To move home (including viewing a property)

- To provide childcare as part of a childcare bubble.



- To visit a person who is dying.

- To work, volunteer or for charity.

CAN SOMEONE VISIT YOUR HOUSE TO DO REPAIRS OR WORK?



Official / registered trade people can go to other people's homes for work.

ESSENTIAL TRAVEL:

PUBLIC TRANSPORT



Only use public transport if you must, such as going to school or work.



A face mask must be worn on public transport unless you are exempt.

CAR SHARING



You are advised not to car share with those outside your household or support bubble.

SCHOOL OR WORK



Schools, Colleges and Universities will stay open, unless told otherwise.



It is OK to travel in or out of Lancashire to go to school or work.

Unless organised by a sports club team sports are not allowed outdoors with people you don't live with.



Indoor organised sport (for over 18s) must keep to six people.

Indoor organised team sports for disabled people are exempt from this.

CHILDCARE

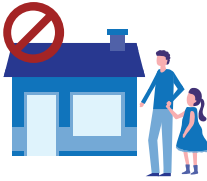


Nurseries, childminders and out-of-school clubs are open.

Children of parents who are separated can move between households.



People caring for children under 14 are allowed in their house.

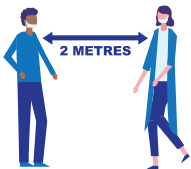


Playdates and parties are not allowed.

SHOPS



A face mask must be worn in shops unless exempt.



You must distance from other people.

You must wait your turn to go into the shop.



You should use the hand sanitiser provided or your own.

FACE MASKS & COVERINGS:

WHO DOES NOT NEED TO WEAR A FACE MASK?



Children Under 11

Employees in Indoors Settings



People with A Medical Exemption



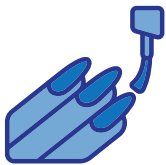
Police and Emergency Workers

When Speaking with Someone Who Relies on Lip Reading

WHO SHOULD WEAR A FACE MASK AT WORK?



Staff in hospitality and retail will be required to wear a face covering unless exempt.



Staff performing close contact services (such as beauty treatments) must wear a face covering and visor.



Staff working on public transport and taxi drivers should wear face coverings.

CAN WE BE FINED FOR NOT WEARING A FACE MASK OR COVERING?



Police can issue fines of £200 for not wearing a mask in public places and on public transport - unless you are exempt.

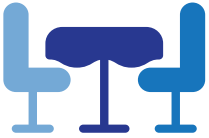
OUT AND ABOUT:

PUBS, RESTAURANTS AND TAKEAWAYS



People must not meet people who do not live with them or are not in their support bubble.

Only go to places such as restaurants and pubs with people you live with or are part of your support bubble.



Food and drink must be ordered at your table.



You must wear a face mask when entering or not sat at your table or visiting the toilet.

Pubs and restaurants must close at 10pm.



10PM CLOSE

Takeaways must close at 10pm but can deliver after 10pm until 5am.

ENTERTAINMENT AND SPORT



It is OK to go to the gym, gym classes and swimming pools.



You should not watch live sporting events.



10PM CLOSE

Leisure and entertainment venues such as cinemas will close at 10pm.

HOLIDAYS



You can still go on holiday in the UK or abroad.



You cannot travel to some places.



You should only go with people you live with or are in your support bubble.



You need to follow any rules in the place you go on holiday.



You may need to stay at home for 14 days when you come back from some countries.

14 DAYS

QUESTIONS?

IF YOU HAVE ANY QUESTIONS PLEASE ASK SOMEONE IN YOUR HOUSEHOLD OR IN YOUR SUPPORT BUBBLE TO EXPLAIN.

